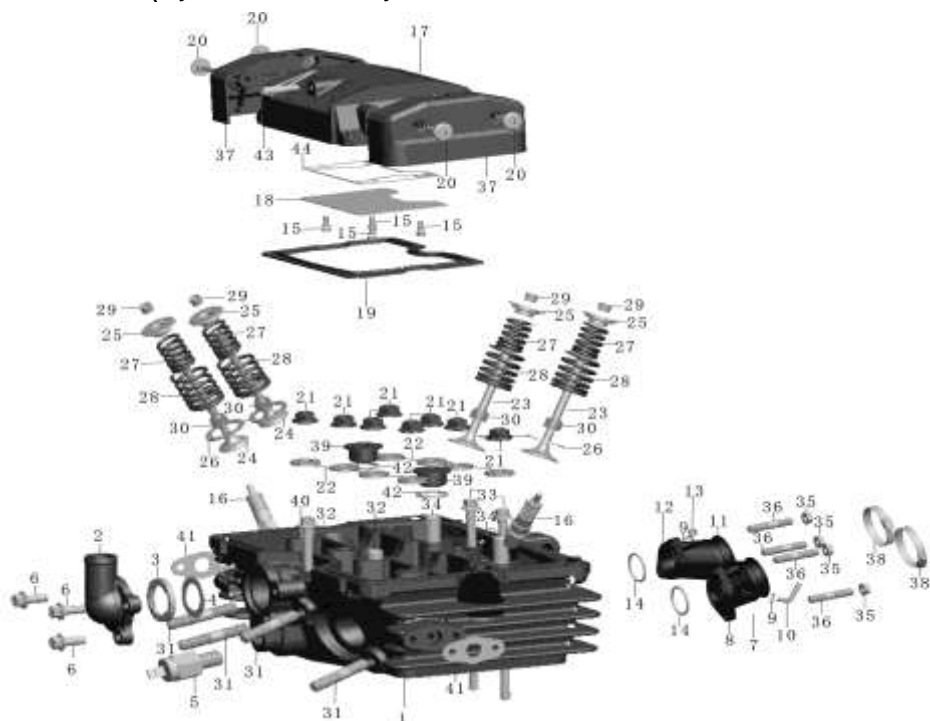


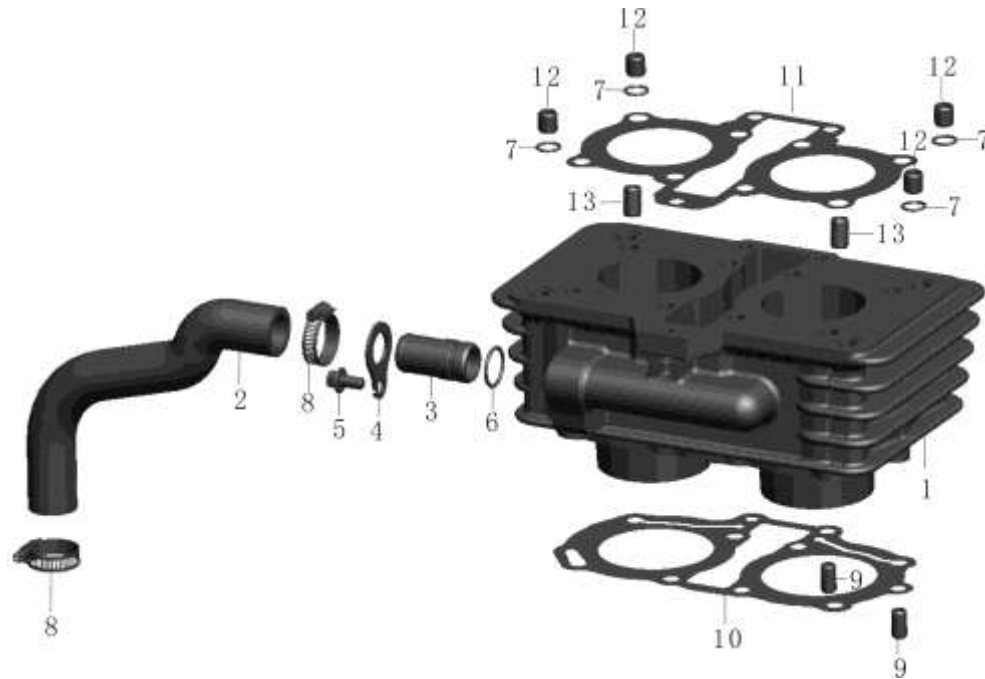
IMPORTANT NOTICE !!!! PRICES QUOTED ARE INCLUSIVE OF VAT AND EX JHB.
PRICES MAY VARY FROM DEALER TO DEALER. PRICES MAY CHANGE WITHOUT NOTICE.

E-1 : 气缸盖总成 (Cylinder head assembly) 新开模具

E-1 : 气缸盖总成 (Cylinder head assembly) 新开模具

NO.	Old drawing ref.code	Description	Quantity	Price incl
1	DD262MP-0101101	Head comp ,cylinder	1	R 1,199.61
2	DD262MP-0101025	hose connector,cyliner,black	1	R 24.48
3	DD250E-9-0117322	rusher,thermosat	1	R 9.18
4	DD250E-9-0117321	rubber seat,thermosat	1	R 12.24
5	DD250E-9-0117310A	tem sensor	1	R 171.37
6	DD250E-0108004A	bolt M6*20	3	R 6.12
7	DD262MP-0101201	right manifold, intake	1	R 67.32
11	DD262MP-0101300	right manifold, intake	1	R 67.32
14	DD250E-0101202A	O-ring $\Phi 26 \times 2.5$	2	R 6.12
15	GB5787-86	Bolt M6x12	4	R 3.06
16	DD150E-4-0101500	NGK	2	R 91.81
17	DD300A-0101024	Cover, cylinder head	1	R 416.19
18	DD300A-0101042	coverplate,cyliner cover	1	R 30.60
19	DD250E-0101003A	packing ,head cover	1	R 61.20
20	DD250E-0101004A	Connect screw of cover	4	R 15.30
21	DD250E-0101005B	Nut, hex M8 4	8	R 6.12
22	DD250E-0101006A	Washer 8	8	R 3.06
23	DD262MP-0101007	Valve, in	2	R 48.96
24	DD262MP-0101008	Valve, ex	2	R 61.20
25	DD250E-0101009B	Retainer, valve spring	4	R 10.40
26	DD250E-0101011A	Seat, valve spring outer	4	R 6.12
27	DD250E-0101012	Spring, valve inner	4	R 12.24
28	DD250E-0101013	Spring, valve outer	4	R 20.20
29	DD250E-0101014B	Cotter, valve	8	R 6.12
30	DD250E-0101120A	Seal, valve stem	4	R 15.30
31	DD250E-0101015A	Bolt stud of escape pipe	4	R 9.18
32	DD250E-0101016A	Pin, dowel 10x16	2	R 4.90
33	DD250E-0101017A	Bolt M6x145	2	R 9.18
34	DD250E-0101019A	Pin, dowel 10x28	2	R 6.12
35	GB/T61772-2000 GB6177-86	Nut M6-ZnD	4	R 6.12
36	DD250E-0101022A	Bolt stud M6x29	4	R 6.12
37	DD250E-9-0101023	Side cover, cylinder head	2	R 171.37
38	DD250E-0101030A	Band insulator1x44	2	R 9.18
39	DD150E-8-0101107	Bolt stops	2	R 12.24
40	DD250E-9-0101018	Bolt M6x83	1	R 4.90
41	DD250E-0101612	Gasket	2	R 6.12
42	DD250E-9-0101101	O-ring $\Phi 15.2 \times 2.5$	2	R 6.12
43	DD250E-0103109	Rubber pipe cover	1	R 9.18
44	DD300A-0101041	gasket,cyliner cover (non asbestos)	1	R 42.84

**IMPORTANT NOTICE !!!! PRICES QUOTED ARE INCLUSIVE OF VAT AND EX JHB.
PRICES MAY VARY FROM DEALER TO DEALER. PRICES MAY CHANGE WITHOUT NOTICE.**

E-2 : 气缸体总成 (Cylinder assembly)

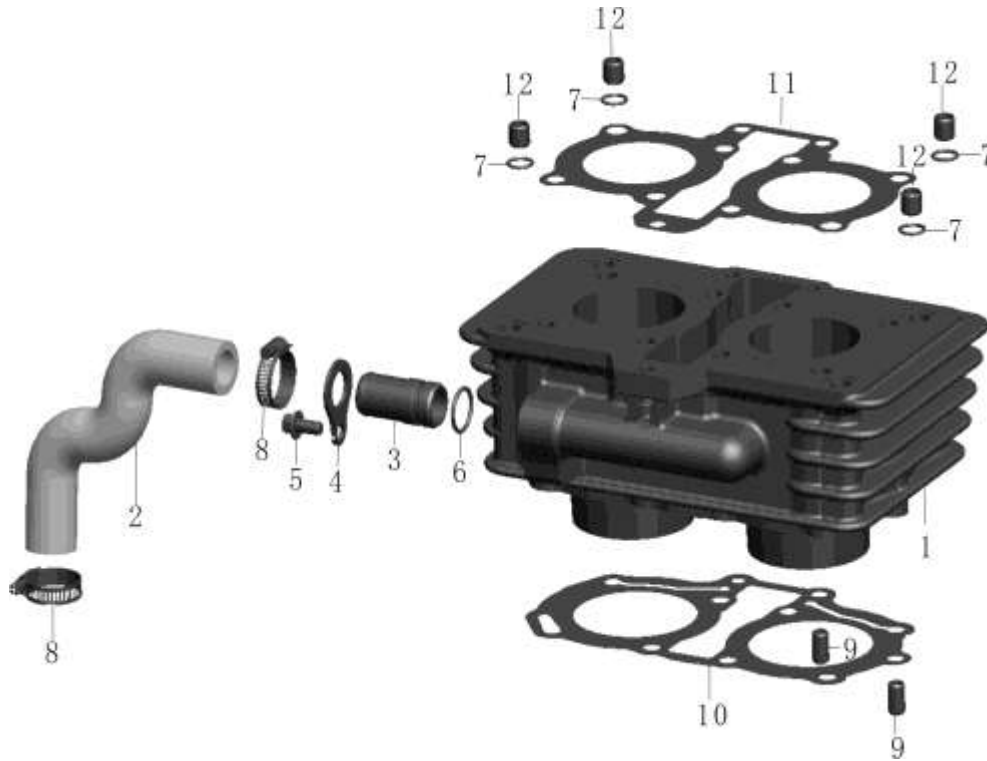


E-2 : 气缸体总成 (Cylinder assembly)

NO.	Old drawing ref.code	Description	Quantity	Price incl
1	DD262MP-0102100	Cylinder comp	1	R 1,714.70
2	DD250E-9-0102004B	Hose, cylinder	1	R 66.17
3	DD250E-9-0101025	Hose connector	1	R 18.31
4	DD250E-9-0101024	Hose connector setting plate	1	R 2.91
5	GB5787-86	Bolt M6x12	1	R 9.16
6	DD250E-9-0101026	O-ringΦ17X2	1	R 2.91
7	DD250E-0101103A	O- ringΦ10×1.6	4	R 2.91
8	DD250E-9-0117010	Hose clip	2	R 12.07
9	DD250E-0102001	Pin, dowel Φ8×14	2	R 2.91
10	DD262MP-0102002	Gasket , cylinder	1	R 36.72
11	DD262MP-0102003	Gasket, cylinder head	1	R 122.36
12	DD250E-9-0102006	Pin, dowel 10×10	4	R 2.91
13	DD250E-0101016A	Pin, dowel Φ10×16	2	R 4.99

**IMPORTANT NOTICE !!!! PRICES QUOTED ARE INCLUSIVE OF VAT AND EX JHB.
PRICES MAY VARY FROM DEALER TO DEALER. PRICES MAY CHANGE WITHOUT NOTICE.**

E-2 : 气缸体总成 (Cylinder assembly) (与右盖新模匹配)

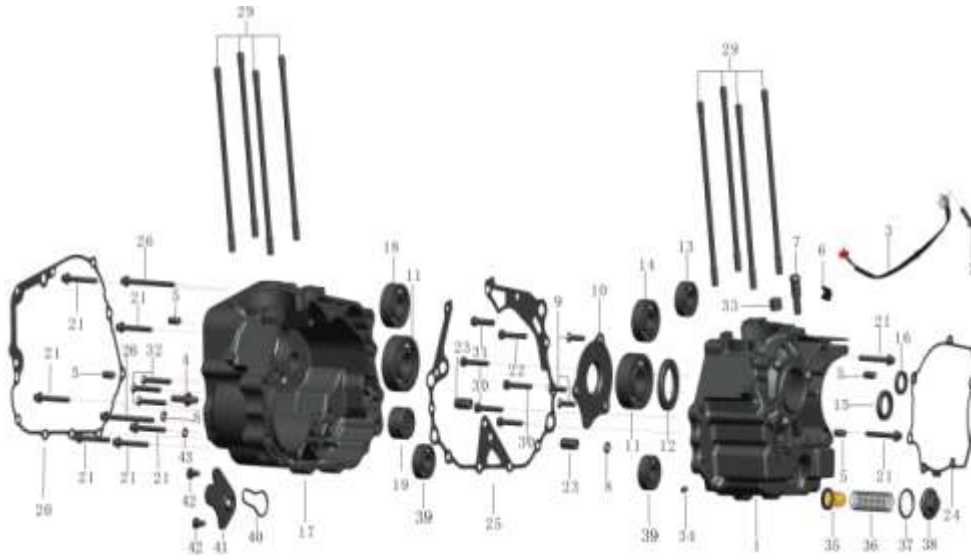


E-2 : 气缸体总成 (Cylinder assembly) (与右盖新模匹配)

NO.	Old drawing ref.code	Description	Quantity	Price incl
1	DD262MP-0102100	Cylinder comp	1	R 1,713.72
2	DD253MM-0102004	Hose, cylinder	1	R 55.08
3	DD250E-9-0101025	Hose connector	1	R 18.36
4	DD250E-9-0101024	Hose connector setting plate	1	R 3.06
5	GB5787-86	Bolt M6×12	1	R 9.18
6	DD250E-9-0101026	O-ringΦ17X2	1	R 3.06
7	DD250E-0101103A	O- ringΦ10×1.6	4	R 3.06
8	DD250E-9-0117010	Hose clip	2	R 12.24
9	DD250E-0102001	Pin, dowel Φ8×14	2	R 3.06
10	DD262MP-0102002	Gasket , cylinder (non asbestos)	1	R 24.48
11	DD262MP-0102003	Gasket, cylinder head	1	R 122.41
12	DD250E-9-0102006	Pin, dowel 10×10	4	R 3.06
13	DD250E-0101016A	Pin, dowel Φ10×16	2	R 4.90

IMPORTANT NOTICE !!!! PRICES QUOTED ARE INCLUSIVE OF VAT AND EX JHB.
PRICES MAY VARY FROM DEALER TO DEALER. PRICES MAY CHANGE WITHOUT NOTICE.

E-3 : 曲轴箱总成 (Crankcase assembly) -带档显



E-3 : 曲轴箱总成 (Crankcase assembly) -带档显

NO.	Old drawing ref.code	Description	Quantity	Price incl
1	DD262MP-0103190B	Left crankcase	1	R 918.07
2	GB5787-86	Bolt M6x12	1	R 3.06
3	DD250E-0103170	Transmishion indercator	1	R 85.69
4	DD250E-0103022A	Pin, shift	1	R 3.67
5	DD250E-0102001	Pin, dowel 8x14	4	R 3.06
6	DD250E-0103107A	jacket, outlet	1	R 15.30
7	DD250E-0103109	Rubber pipe cover	1	R 9.18
8	DD250E-0103111A	O-ring 6x3	2	R 12.24
9	GB819-85	Screw M6x16	3	R 3.06
10	DD250E-0103120	Plate, oil through	1	R 67.32
11	GB/T276-94	Bearing 6305/P6	2	R 110.17
12	DD250E-0103130	Oil seal35x52x7	1	R 59.98
13	GB/T276-94	Bearing 6202-Z/P6	1	R 30.60
14	DD250E-0103140A	Bearing 22x47x14-RS/P6	1	R 55.08
15	DD250E-0103150	Oil seal22x34x7	1	R 42.84
16	DD250E-0103160	Oil seal11.6x24x10	1	R 13.46
17	DD262MP-0103210B	Right crankcase	1	R 1,224.09
18	GB/T276-94	Roller bearing 6304/P6	1	R 58.14
19	DD250E-0103220A	Needle-bearing NK152312	1	R 42.84
20	DD262MP-0103001	Gasket,right crankcase cover	1	R 18.36
21	DD250E-0112001A	Bolt M6x40	8	R 6.12
22	DD250E-0103021A	Bolt M8x1x30	1	R 6.12
23	DD250E-0103005A	Pin,dowel 12x20	2	R 6.12
24	DD250E-0103006B	Gasket,side spacer	1	R 15.30
25	DD262MP-0103007A	Gasket,crankcase	1	R 42.84
26	DD250E-0108006A	Bolt M6x65	2	R 6.12
27	DD250E-0103011A	Screw M12x1.5	1	R 9.18
28	DD250E-0103012A	Washer 12	1	R 6.12
29	DD250E-0103015A	Bolt, cylinder head stud	8	R 15.91
30	DD250E-0103016A	Bolt M8x1x35	4	R 3.67
31	DD262MP-0103023	Bolt M7x1x19	1	R 6.12
32	GB819-85	Screw M6x32-ZnD	3	R 3.06
33	DD250E-0103101		1	R 3.06
34	DD250E-0103102		1	R 3.06
35	DD150E-2-0103092	screen ,oil filter	1	R 30.60
36	DD300A-0112004	spring,oil filter	1	R 18.36
37	DD50E (1B) -0101018	O ring,30.8*3.2	1	R 4.16
38	JH70.20108	valve cover	1	R 24.56
39	GB/T276-94	bearing 6301/P5	2	R 61.20
40	DD262MP-0103026	seal ring,oil pump	1	R 24.48
41	DD262MP-0103024	pressing plate, oil pump	1	R 9.16
42	GB/T 818-2000	screw M5*8	2	R 9.18
43	DD262MP-0103025	O ring 8*3	1	R 9.16

IMPORTANT NOTICE !!!! PRICES QUOTED ARE INCLUSIVE OF VAT AND EX JHB.
PRICES MAY VARY FROM DEALER TO DEALER. PRICES MAY CHANGE WITHOUT NOTICE.

E-4 : 曲轴连杆总成 (Crankshaft connecting rod piston assembly)

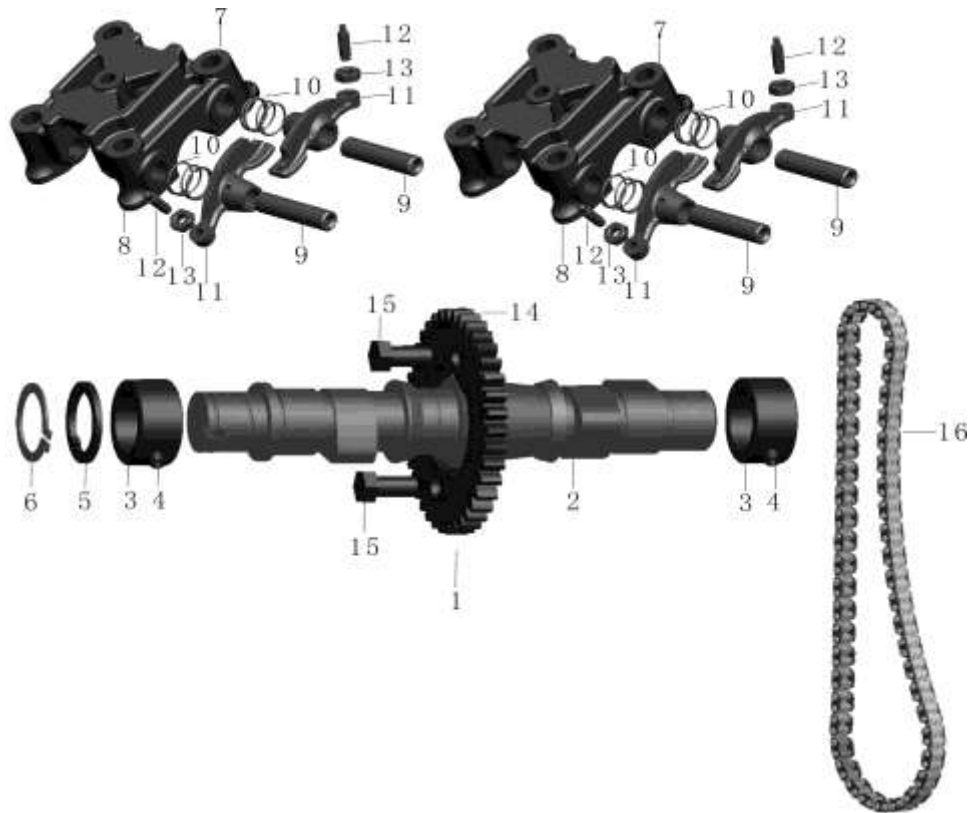


E-4 : 曲轴连杆总成 (Crankshaft connecting rod piston assembly)

NO.	Old drawing ref.code	Description	Quantity	Price incl
1	DD262MP-0104100A	Crankshaft comp	1	R 2,080.95
2	DD262MP-0104201	piston	2	R 232.58
3	DD262MP-0104202	Pin, piston	2	R 15.30
4	DD262MP-0104203	1st piston ring	2	R 183.61
5	DD262MP-0104204	2nd piston ring	2	R 26.93
6	DD262MP-0104210	Oil seal set	2	R 18.36
	DD262MP-0104211	expander ring	2	R 61.20
	DD262MP-0104212	Scaper	4	R 61.20
7	DD250E-0104205A	Clip, piston pin	4	R 3.06
8	DD250E-0104300A	Chain stretching comp	1	R 223.40
9	DD250E-0104001A	Guide, cam chain	1	R 85.69
10	DD250E-0104002A	Gear, primary drive	1	R 140.77
11	DD250E-9-0104011	Gear, oil pump drive	1	R 91.81
12	DD250E-0104004A	Washer, lock	1	R 3.06
13	DD250E-0104005A	Nut, hex M16x1	1	R 6.12
14	DD250E-0104006C	Bolt, rotor setting	1	R 12.24
15	DD250E-0104007B	Sprocket comp, starting	1	R 214.22
16	DD250E-0104008	Washer 12	1	R 3.06
17	DD250E-0104009A	Pin $\phi 2 \times 14$	1	R 3.06
18	DD250E-0104011A	Spring, oil through	1	R 4.90
19	DD250E-0104012A	Through oil	1	R 12.24
20	DD250E-0104013A	BoltM6x26	2	R 6.12
21	DD250E-0104014A	Washer 6	2	R 3.06
22	DD250E-0104020	Oil seal22x31x5	1	R 36.72
23	DD250E-0104015A	Washer	1	R 3.06
24	DD250E-0104016B	Flexible spring	1	R 3.06
25	GB119-86	pin B6*14	1	R 6.12
27	DD262MP-0104400	balance shaft assy	1	R 306.02

**IMPORTANT NOTICE !!!! PRICES QUOTED ARE INCLUSIVE OF VAT AND EX JHB.
PRICES MAY VARY FROM DEALER TO DEALER. PRICES MAY CHANGE WITHOUT NOTICE.**

E-5 : 配气机构总成 (Allot air organization assembly)

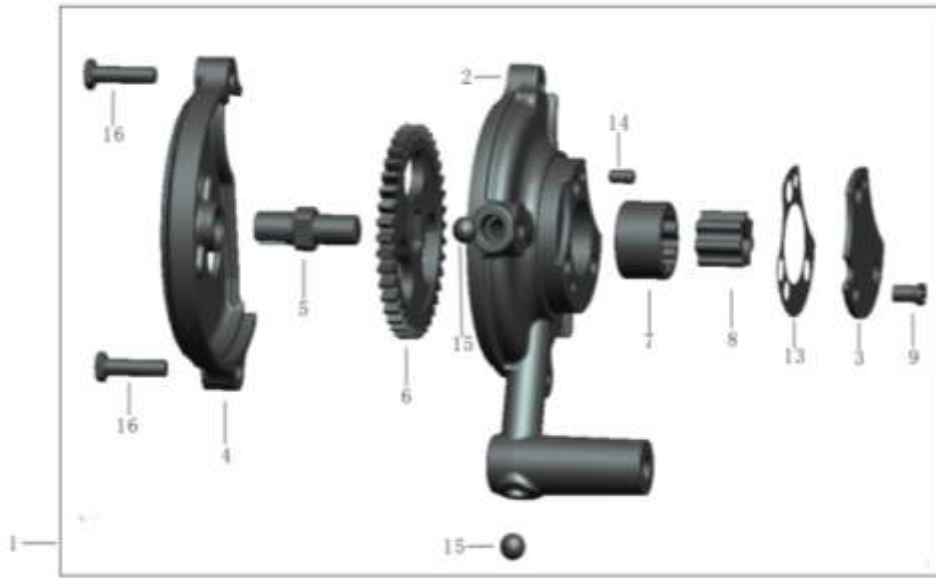


E-5 : 配气机构总成 (Allot air organization assembly)

NO.	Old drawing ref.code	Description	Quantity	Price incl
1	DD250E-0105100	Camshaft	1	R 354.99
2	DD250E-0105101A	Camshaft	1	R 30.60
3	DD250E-0105102A	Bush, camshaft	2	R 3.06
4	DD250E-0105103A	Pin, dowel bush camshaft	2	R 1.22
5	GB/T894.2-86	Circlip, externa 20	1	R 6.12
6	DD250E-0105105A	Washer, thrust	1	R 257.06
7	DD262MP-0105200	Holder comp, camshaft M8	2	R 110.17
14	DD250E-0105001A	Sprocket, cam	1	R 110.17
15	DD250E-0105002A	Bolt M7×13	2	R 6.12
16	DD250E-01053000A	Chain, cam	1	R 688.55

**IMPORTANT NOTICE !!!! PRICES QUOTED ARE INCLUSIVE OF VAT AND EX JHB.
PRICES MAY VARY FROM DEALER TO DEALER. PRICES MAY CHANGE WITHOUT NOTICE.**

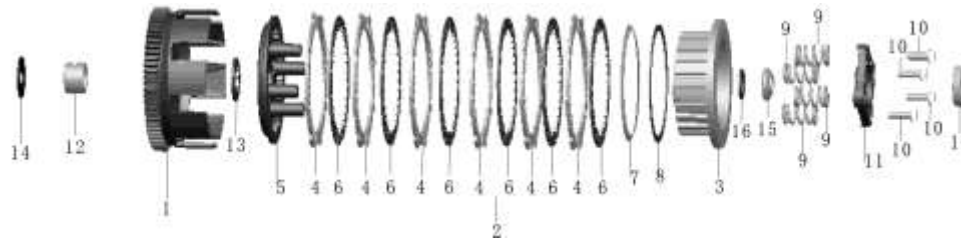
E-6 : 机油泵总成 (Oil pump assembly)



E-6 : 机油泵总成 (Oil pump assembly)

NO.	Old drawing ref.code	Description	Quantity	Price incl
1	DD250E-9-0106000 (DD150E-8-0106000)	Pump assy,oil	1	R 1,003.75

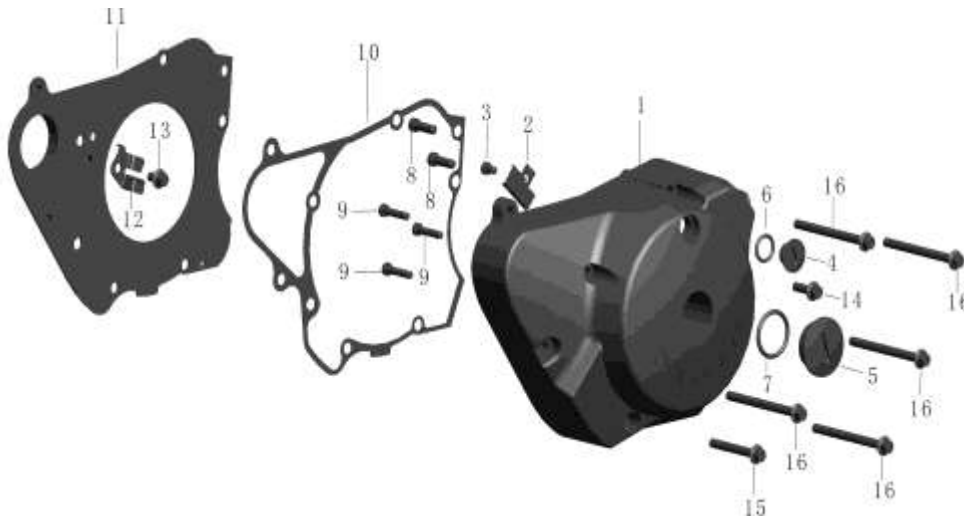
IMPORTANT NOTICE !!!! PRICES QUOTED ARE INCLUSIVE OF VAT AND EX JHB.
PRICES MAY VARY FROM DEALER TO DEALER. PRICES MAY CHANGE WITHOUT NOTICE.

E-7 : 离合器总成 (Clutch assembly)

E-7 : 离合器总成 (Clutch assembly)

NO.	Old drawing ref.code	Description	Quantity	Price incl
1	DD250E-0107110A	Outer comp, clutch	1	R 459.03
2	DD250E-0107120A	Center frame comp	1	R 422.31
4	DD250E-0107122A	Disk, clutch friction	6	R 24.48
6	DD250E-0107124A	Plate, clutch	7	R 16.53
14	DD250E-0107001A	Washer	1	R 3.06
15	DD250E-0107002A	Circular nut	1	R 12.24
16	DD250E-0107003A	Washer, thrust	1	R 3.06
17	DD250E-0107200A	Pushing bearing	1	R 70.39

**IMPORTANT NOTICE !!!! PRICES QUOTED ARE INCLUSIVE OF VAT AND EX JHB.
PRICES MAY VARY FROM DEALER TO DEALER. PRICES MAY CHANGE WITHOUT NOTICE.**

E-8 : 左曲轴箱盖总成 (Left crankcase cover assembly)

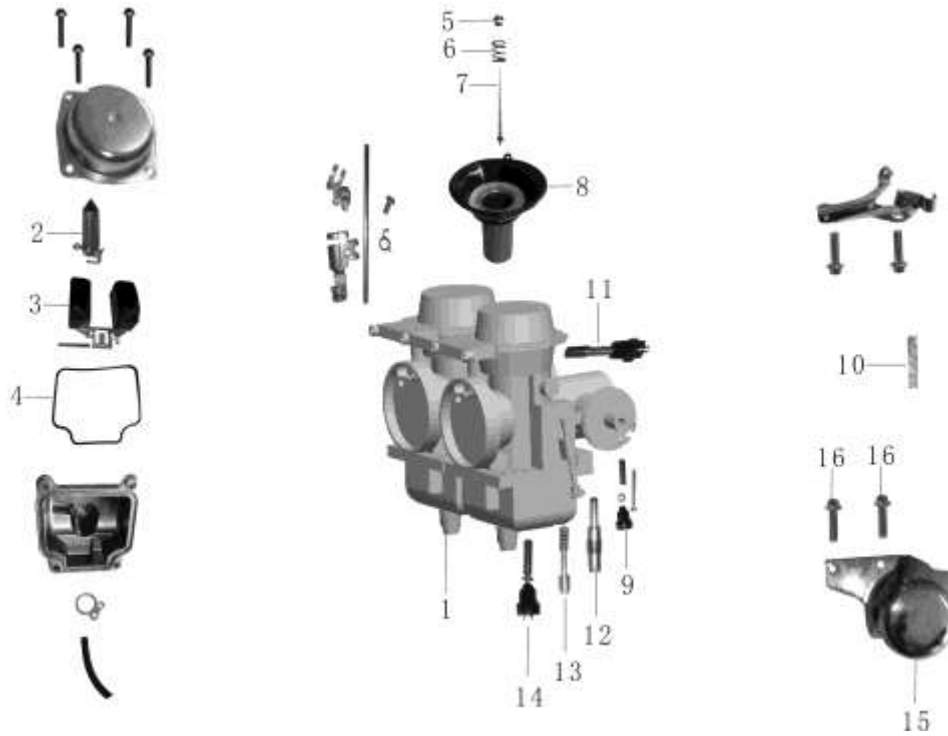


E-8 : 左曲轴箱盖总成 (Left crankcase cover assembly)

NO.	Old drawing ref.code	Description	Quantity	Price incl
1	DD250E-0108101A	Cover, left crankcase	1	R 783.42
2	DD250E-0108102A	Tension Disc	1	R 7.34
3	GB70-85	Screw, hex M5x30-ZnD	1	R 3.06
4	DD250E-0108103A	Screw M14x1.5	1	R 14.38
5	DD250E-0108104A	Screw M30x1.5	1	R 23.01
6	DD250E-0108105	O-ring 13.8x25	1	R 6.12
7	DD250E-0108106	O-ring 25.8x3.1	1	R 6.12
8	GB70-85	Screw, hex M6x20-ZnD	2	R 3.06
9	GB70-85	Screw, hex M5x30-ZnD	3	R 3.06
10	DD250E-0108001A	Gasket, left crankcase cover	1	R 36.72
11	DD250E-0108002A	Spacer comp, left side	1	R 61.20
12	DD250E-0108003A	Plate, starting sprocket setting	1	R 3.06
13	GB5787-86 M6x10	Bolt M6x10-ZnD	1	R 4.90
14	DD250E-0108004A	Bolt M6x20	1	R 6.12
15	DD250E-0112002A	Bolt M6x50	1	R 6.12
16	DD250E-0108006	Bolt M6x65	5	R 6.12

**IMPORTANT NOTICE !!!! PRICES QUOTED ARE INCLUSIVE OF VAT AND EX JHB.
PRICES MAY VARY FROM DEALER TO DEALER. PRICES MAY CHANGE WITHOUT NOTICE.**

E-9 : 化油器总成 (双腔) (Carburetor assembly)

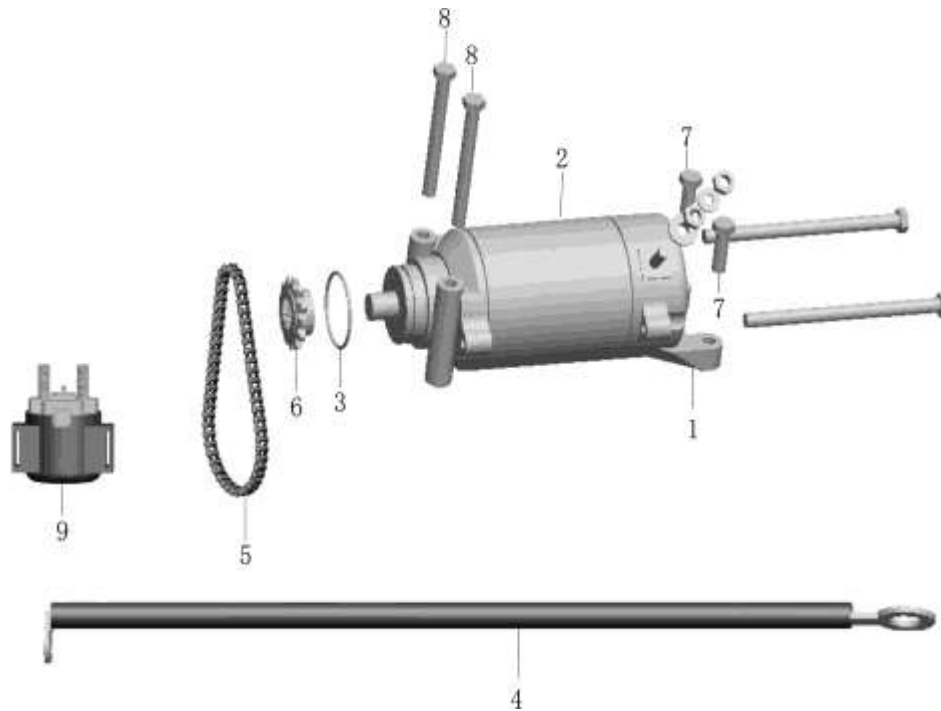


E-9 : 化油器总成 (双腔) (Carburetor assembly)

NO.	Old drawing ref.code	Description	Quantity	Price incl
1	DD250E-0109100	Carburetor, assy	1	R 2,142.15
15	DD250E-0109001	Decorative cover, carburetor	1	R 232.58

**IMPORTANT NOTICE !!!! PRICES QUOTED ARE INCLUSIVE OF VAT AND EX JHB.
PRICES MAY VARY FROM DEALER TO DEALER. PRICES MAY CHANGE WITHOUT NOTICE.**

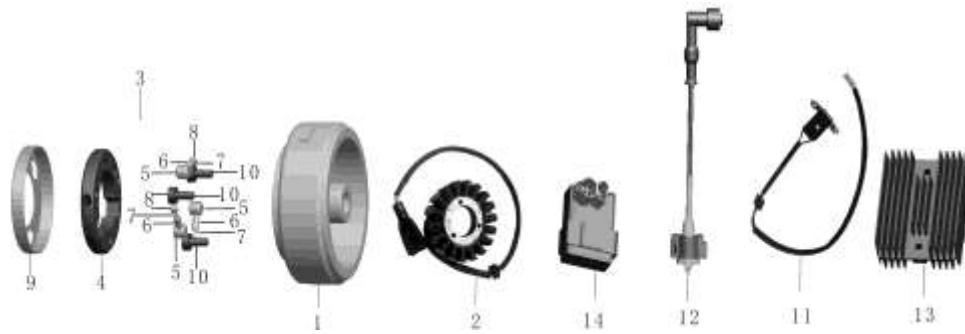
E-10 : 电启动总成 (Electricity starting assembly)



E-10 : 电启动总成 (Electricity starting assembly)

NO.	Old drawing ref.code	Description	Quantity	Price incl
1	DD250E-0110100	Starting motor	1	R 1,224.09
4	DD250E-0110110	connecting cable, starting motor	1	R 36.72
5	DD250E-0110300A	Chain, starting	1	R 78.34
6	DD250E-0110102A	Sprocket, starting motor	1	R 55.08
7	DD250E-0110001	Bolt M6x22	2	R 6.12
8	DD250E-0108006A	Bolt M6x65	2	R 6.12
9	DD250E-0110200	starting relay	1	R 85.69

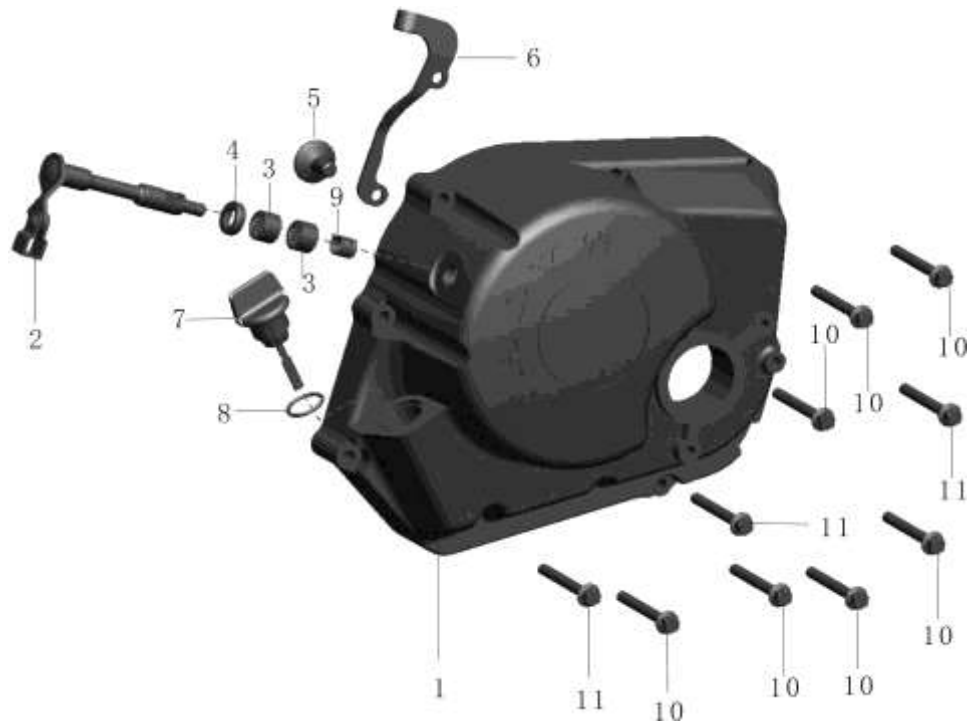
**IMPORTANT NOTICE !!!! PRICES QUOTED ARE INCLUSIVE OF VAT AND EX JHB.
PRICES MAY VARY FROM DEALER TO DEALER. PRICES MAY CHANGE WITHOUT NOTICE.**

E-11 : 电器系统分总成 (Electrical system)

E-11 : 电器系统分总成 (Electrical system)

NO.	Old drawing ref.code	Description	Quantity	Price incl
1	DD250E-0111110B	Flywheel comp	1	R 428.43
2	DD250E-0111120B	Stator comp	1	R 379.47
3	DD250E-0111130C	Starting clutch	1	R 143.83
10	DD250E-0111137	Screw M8*16-ZnD	3	R 30.60
11	DD300E-0111150B	Sensor set	1	R 55.08
12	DD250E-0111300ZH	ignition coil	1	R 121.18
13	DD300E-6-0111400	rectifier regulator	1	R 361.11
14	DD250E-9-0111500	igniter	1	R 324.38

**IMPORTANT NOTICE !!!! PRICES QUOTED ARE INCLUSIVE OF VAT AND EX JHB.
PRICES MAY VARY FROM DEALER TO DEALER. PRICES MAY CHANGE WITHOUT NOTICE.**

E-12 : 右曲轴箱盖总成 (Right crankcase cover assembly)

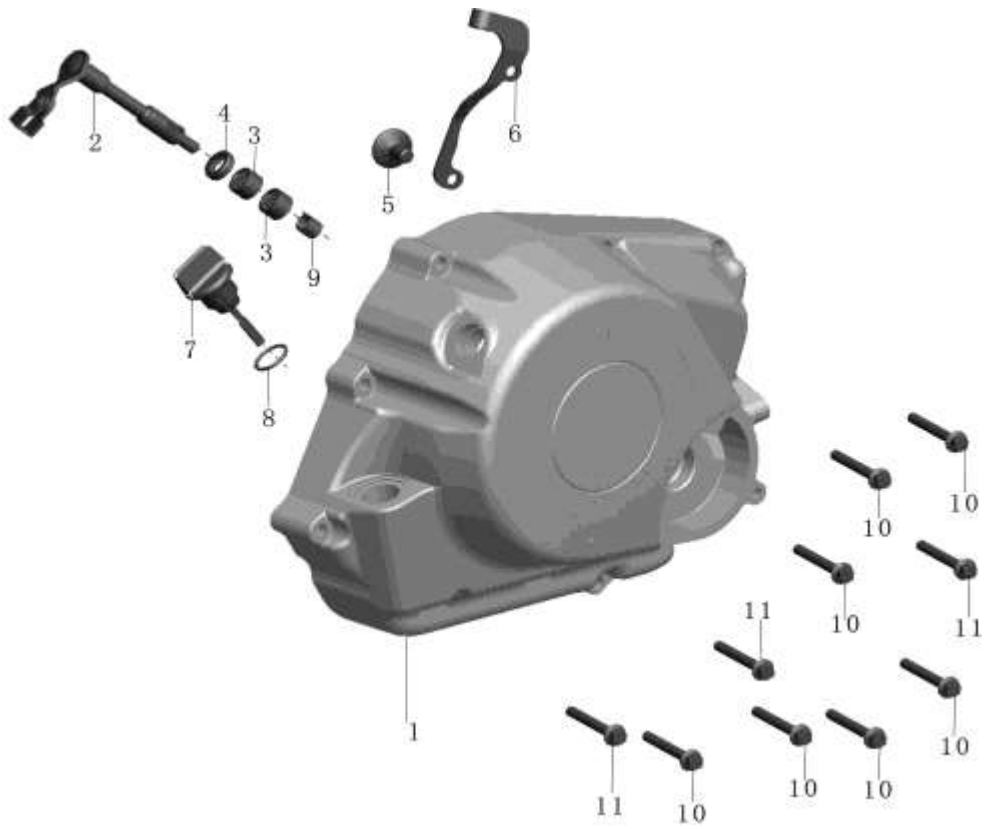


E-12 : 右曲轴箱盖总成 (Right crankcase cover assembly)

NO.	Old drawing ref.code	Description	Quantity	Price incl
1	DD250E-9-0112101	Cover comp,right crankcase	1	R 807.90
2	DD250E-0112110A	lever comp, clutch	1	R 61.20
3	DD250E-0112120	Bearing HK1210	2	R 17.75
4	DD250E-0112130	Oil seal 12×18×5	1	R 9.79
5	DD250E-0112102A	Pin, clutch lifter	1	R 10.40
6	DD250E-0112103A	Receiver, clutch cable	1	R 17.75
7	DD250E-0112141A	Gauge, oil level	1	R 11.02
8	DD250E-0112142A	O- ringΦ18×3	1	R 6.12
9	DD250E-0112106A	Spring S	1	R 6.12
10	DD250E-0112001A	Bolt M6×40	7	R 6.12
11	DD250E-0112002A	Bolt M6×50	3	R 6.12

**IMPORTANT NOTICE !!!! PRICES QUOTED ARE INCLUSIVE OF VAT AND EX JHB.
PRICES MAY VARY FROM DEALER TO DEALER. PRICES MAY CHANGE WITHOUT NOTICE.**

E-12 : 右曲轴箱盖总成 (Right crankcase cover assembly) 新模具

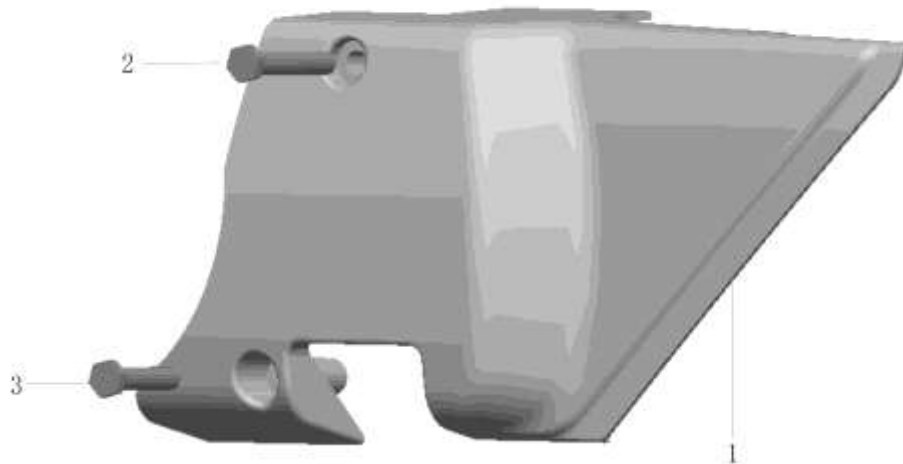


E-12 : 右曲轴箱盖总成 (Right crankcase cover assembly) 新模具

NO.	Old drawing ref.code	Description	Quantity	Price incl
1	DD262MP-0103210B	Cover comp,right crankcase	1	R 918.07
2	DD250E-0112110A	lever comp, clutch	1	R 61.20
3	DD250E-0112120	Bearing HK1210	2	R 17.75
4	DD250E-0112130	Oil seal 12×18×5	1	R 9.79
5	DD250E-0112102A	Pin, clutch lifter	1	R 10.40
6	DD250E-0112103A	Receiver, clutch cable	1	R 17.75
7	DD250E-0112141A	Gauge, oil level	1	R 11.02
8	DD250E-0112142A	O- ringΦ18×3	1	R 6.12
9	DD250E-0112106A	Spring S	1	R 6.12
10	DD250E-0112001A	Bolt M6×40	7	R 6.12
11	DD250E-0112002A	Bolt M6×50	3	R 6.12

**IMPORTANT NOTICE !!!! PRICES QUOTED ARE INCLUSIVE OF VAT AND EX JHB.
PRICES MAY VARY FROM DEALER TO DEALER. PRICES MAY CHANGE WITHOUT NOTICE.**

E-13 : 左曲轴箱后盖总成 (Left rear crankcase cover assembly)

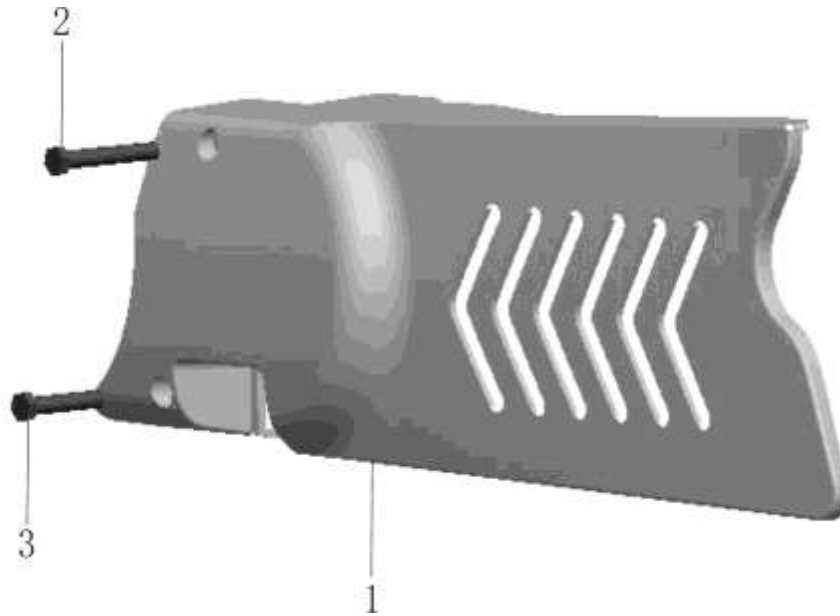


E-13 : 左曲轴箱后盖总成 (Left rear crankcase cover assembly)

NO.	Old drawing ref.code	Description	Quantity	Price incl
1	DD250E-0113100B	Left rear crankcase	1	R 306.02
2	DD250E-0113001	Bolt M6X46	1	R 1.84
3	DD250E-0113002	Bolt M6X60	1	R 1.66

**IMPORTANT NOTICE !!!! PRICES QUOTED ARE INCLUSIVE OF VAT AND EX JHB.
PRICES MAY VARY FROM DEALER TO DEALER. PRICES MAY CHANGE WITHOUT NOTICE.**

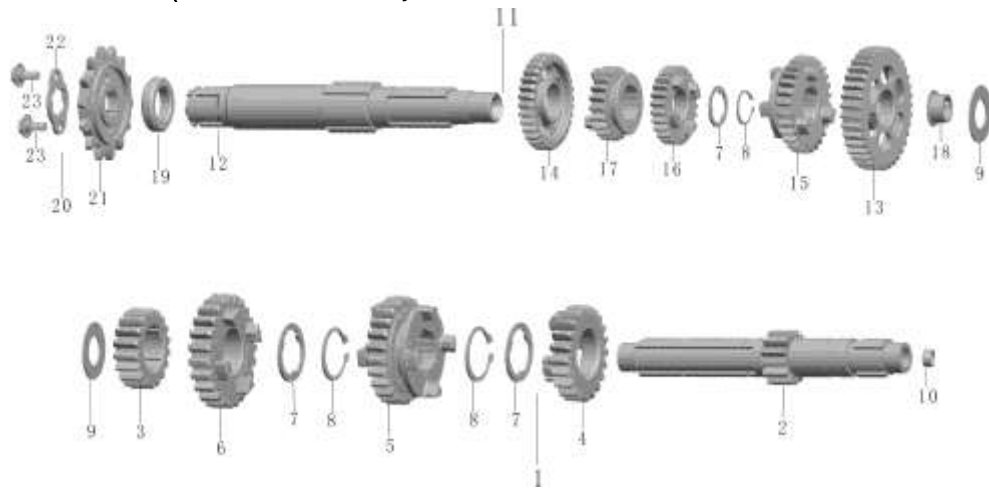
E-13 : 左曲轴箱后盖总成 (Left rear crankcase cover assembly) 跑车



序号 NO.	旧零件图号 Old drawing ref.code	物料名称 Description	用量 Quantity	Price incl
1	DD250E-6-0113100	Left rear crankcase	1	R 459.03
2	DD250E-0113001	Bolt M6X46	1	R 18.36
3	DD250E-0113002	Bolt M6X60	1	R 18.31

**IMPORTANT NOTICE !!!! PRICES QUOTED ARE INCLUSIVE OF VAT AND EX JHB.
PRICES MAY VARY FROM DEALER TO DEALER. PRICES MAY CHANGE WITHOUT NOTICE.**

E-14 : 变速器总成 (Transmission assembly)

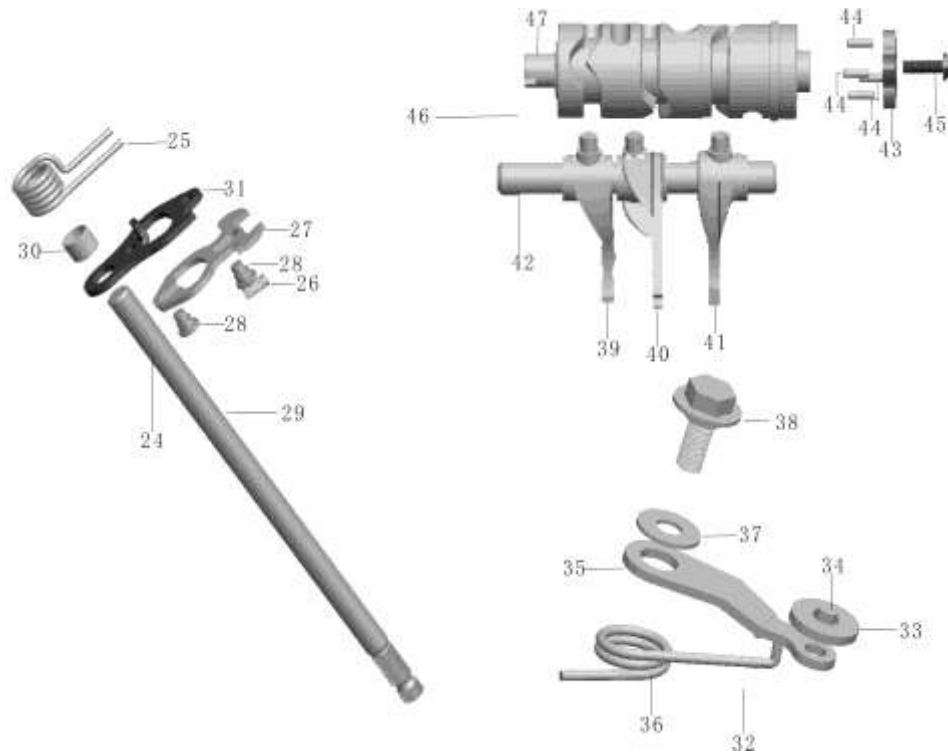


E-14 : 变速器总成 (Transmission assembly)

NO.	Old drawing ref.code	Description	Quantity	Price incl
1	DD250E-0114100A	main shaft	1	R 673.25
11	DD250E-0114200B	Countershaft	1	R 673.25
12	DD250E-0114201C	Countershaft comp	1	R 563.08
20	DD250E-0114400A	counter shaft assy	1	R 116.29
22	DD250E-0114402A	Plate, fixing	1	R 18.36
23	GB5783-86 M6x10	Bolt M6x10/ZnD	2	R 6.12

**IMPORTANT NOTICE !!!! PRICES QUOTED ARE INCLUSIVE OF VAT AND EX JHB.
PRICES MAY VARY FROM DEALER TO DEALER. PRICES MAY CHANGE WITHOUT NOTICE.**

E-14 : 变速器总成 (Transmission assembly) 档显)

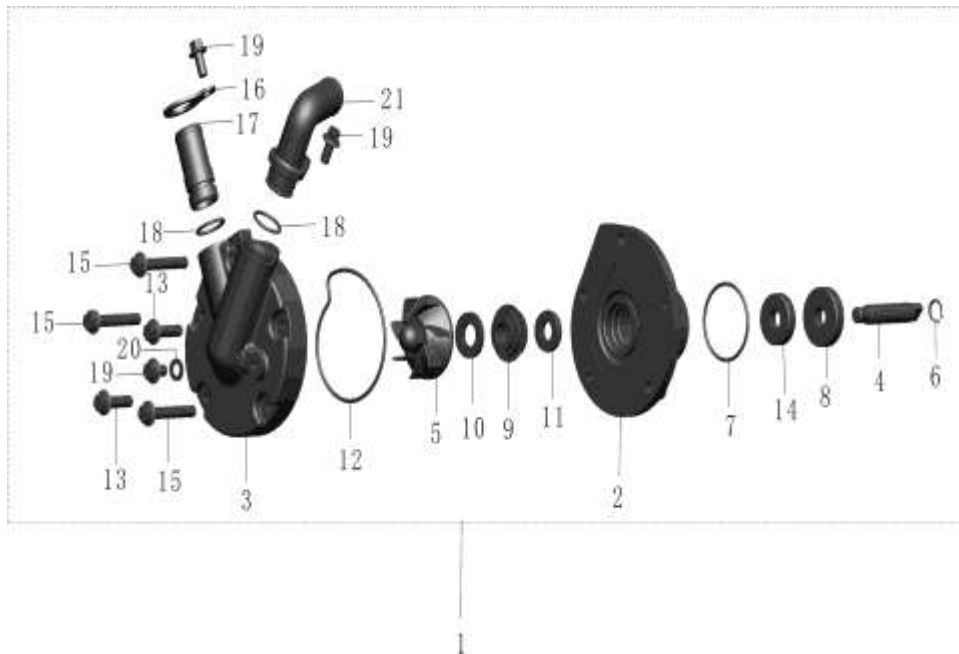


E-14 : 变速器总成 (Transmission assembly) 档显)

NO.	Old drawing ref.code	Description	Quantity	Price incl
24	DD250E-0114300C	Spindle comp, gearshift	1	R 116.29
32	DD250E-0114500A	Stopper comp, gearshift drum	1	R 15.30
36	DD250E-0114501	Spring, shift drum stopper	1	R 6.12
37	DD250E-0114502A	Washer 6	1	R 3.06
38	DD250E-0114503	Screw M6x12	1	R 6.12
39	DD250E-0114001	Fork, left gearshift	1	R 71.61
40	DD250E-0114002	Fork, center gearshift	1	R 71.61
41	DD250E-0114003	Fork, right gearshift	1	R 71.61
42	DD250E-0114004A	Shaft, gearshift fork guide	1	R 18.36
43	DD250E-0114005	Plate, drum stopper	1	R 47.13
44	DD250E-0114006	Pin, gearshift drum	4	R 0.61
45	DD250E-0114007	Screw M6x20	1	R 6.12
47	DD250E-0114601	Drum, gearshift	1	R 176.46

**IMPORTANT NOTICE !!!! PRICES QUOTED ARE INCLUSIVE OF VAT AND EX JHB.
PRICES MAY VARY FROM DEALER TO DEALER. PRICES MAY CHANGE WITHOUT NOTICE.**

E-16 : 水泵总成Water pump assembly)-老模具

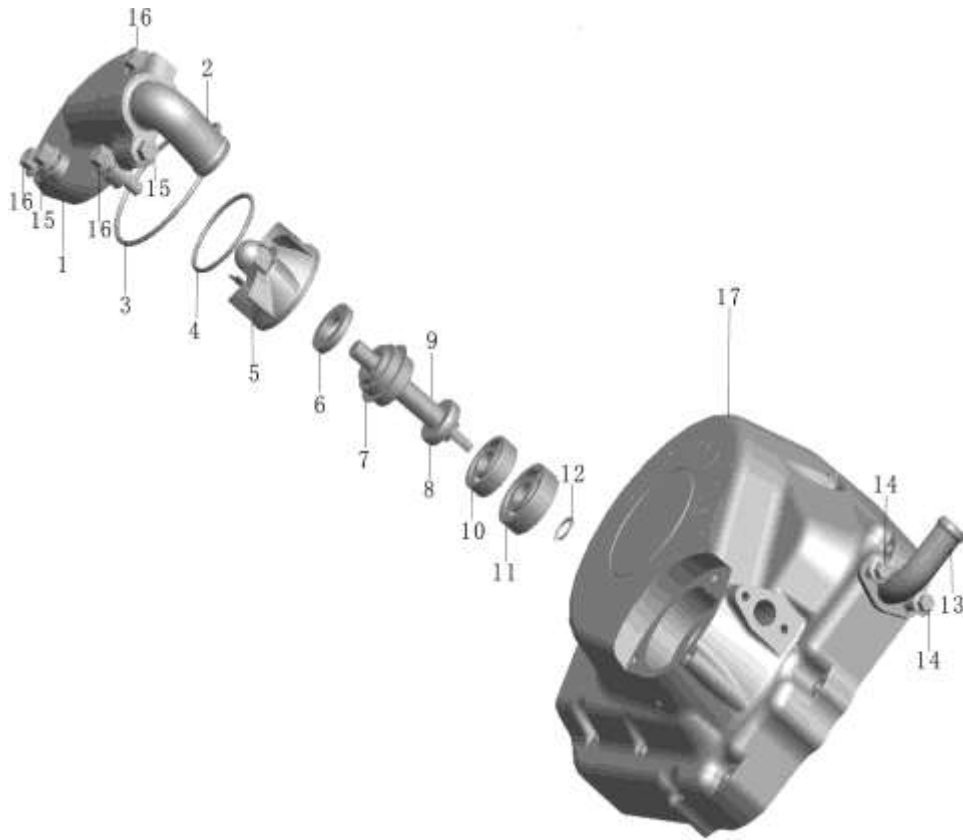


E-16 : 水泵总成Water pump assembly)-老模具

NO.	Old drawing ref.code	Description	Quantity	Price incl
1	DD250E-9-0116000	Water pump comp	1	R 244.82
2	DD250E-9-0116001	Water pump hull	1	R 97.93
3	DD250E-9-0116002	Water pump cover	1	R 116.29
4	DD250E-9-0116003	Water pump shaft	1	R 18.36
5	DD250E-9-0116004	Fan	1	R 18.31
6	GB896-86	Retaining ring 8	1	R 1.84
7	DD250E-9-0116005	O-ringφ36x2	1	R 3.67
8	GB/T276-94	Bearing 6200	1	R 36.72
9	DD250E-9-0116100	Water seal A	1	R 110.17
10	DD250E-9-0116200	Water seal B	1	R 12.24
11	DD250E-9-0116300	Oil seal 21x10x5	1	R 9.18
12	DD250E-9-0116006	O-ring of pump cover	1	R 9.16
13	DD250E-9-0116011	Bolt M6x30	2	R 15.30
14	GB/T276-94	Bearing 6000	1	R 25.71
15	DD250E-0112001A	Bolt M6x40	3	R 6.12
16	DD250E-9-0101024	Hose connector setting plate	1	R 3.06
17	DD250E-9-0101025	Hose connector	1	R 18.36
18	DD250E-9-0101026	O-ring φ17x2	2	R 3.06
19	GB5787-86	Bolt M6x12	3	R 9.18
20	GB/T848-2000	Washer 6	1	R 0.61
21	DD250E-9-0116012	inlet water pump connector	1	R 42.84

**IMPORTANT NOTICE !!!! PRICES QUOTED ARE INCLUSIVE OF VAT AND EX JHB.
PRICES MAY VARY FROM DEALER TO DEALER. PRICES MAY CHANGE WITHOUT NOTICE.**

E-16 : 水泵总成Water pump assembly)-新改模具

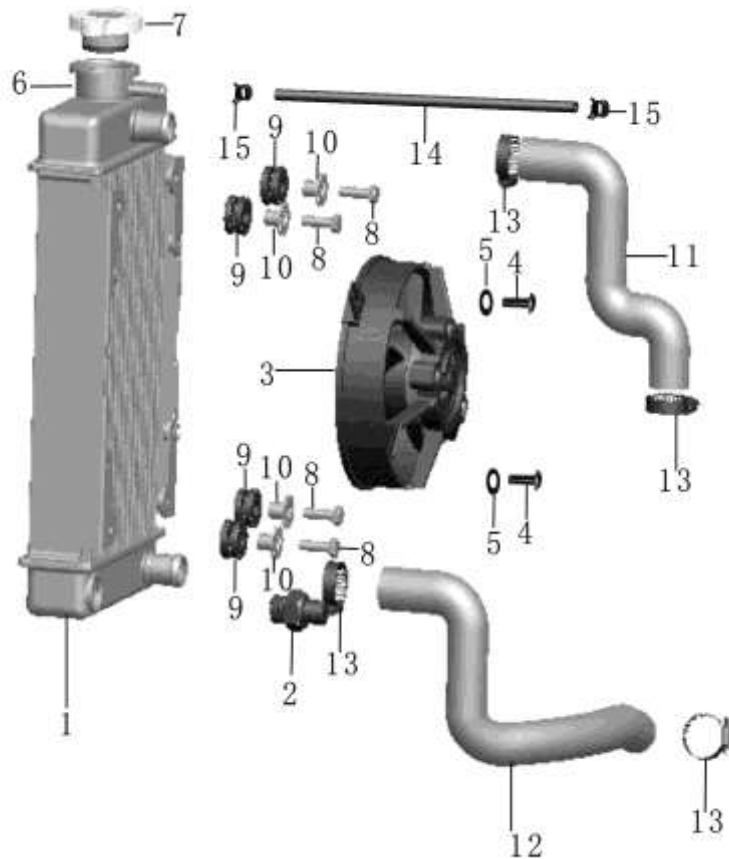


E-16 : 水泵总成Water pump assembly)-新改模具

NO.	Old drawing ref.code	Description	Quantity	Price incl
1	DD250E-9-0116002	Water pump cover	1	R 116.29
2	DD250E-9-0116012	inlet water pump connector	1	R 42.84
3	DD250E-9-0116006	O-ring of pump cover	1	R 9.18
4	DD250E-9-0116005	O-ringφ36x2	1	R 3.67
5	DD250E-9-0116004	Fan	1	R 18.36
6	DD250E-9-0116200	Water seal B	1	R 12.24
7	DD250E-9-0116100	Water seal A	1	R 110.17
8	DD250E-9-0116300	Oil seal 21x10x5	1	R 9.18
9	DD250E-9-0116003	Water pump shaft	1	R 18.36
10	GB/T276-94	Bearing 6000	1	R 25.71
11	GB/T276-94	Bearing 6200	1	R 36.72
12	GB896-86	Retaining ring 8	1	R 1.84
13	DD253MM-0112109	hose connector	1	R 30.60
14	GB5787-86	bolt M6*16	2	R 6.12
15	GB5787-86	bolt M6*12	2	R 9.18
16	DD250E-0108004A	bolt M6*20	3	R 6.12
17	DD253MM-0112101A	left crankcase cover	1	R 918.07

**IMPORTANT NOTICE !!!! PRICES QUOTED ARE INCLUSIVE OF VAT AND EX JHB.
PRICES MAY VARY FROM DEALER TO DEALER. PRICES MAY CHANGE WITHOUT NOTICE.**

E-17 : 冷却系统Cooling system)与气缸盖新模具匹配



E-17 : 冷却系统Cooling system)与气缸盖新模具匹配

NO.	Old drawing ref.code	Description	Quantity	
1	DD250E-9-0117110C	Radiator	1	R 1,407.70
2	DD250E-9-0117120	Fan motor switch	1	R 244.82
3	DD250E-9-0117200	Fan set	1	R 428.43
4	GB/T818-2000	Bolt M5x12	2	R 3.06
5	GB96-85	Washer 5	2	R 3.06
7	DD250E-9-0117410	Radiator cap	1	R 48.96
8	DD250E-0108004A	Bolt M6x20	4	R 6.12
9	DD250E-9A-0117007	Radiator cushion Washer	4	R 27.54
10	DD250E-9A-0117006	Radiator Cushion Washer	4	R 27.54
11	DD250E-9-0117001A	Hose of water enter radiator	1	R 24.48
12	DD250E-9-0117002B	Hose of water out-flow from radiator	1	R 66.10
13	DD250E-9-0117010	Tube clip	6	R 12.24
14	DD250E-9-0117005	Hose of water enter reservoir tank	1	R 91.81
15	DD250E-9-0117003	Hose clip	2	R 7.34